



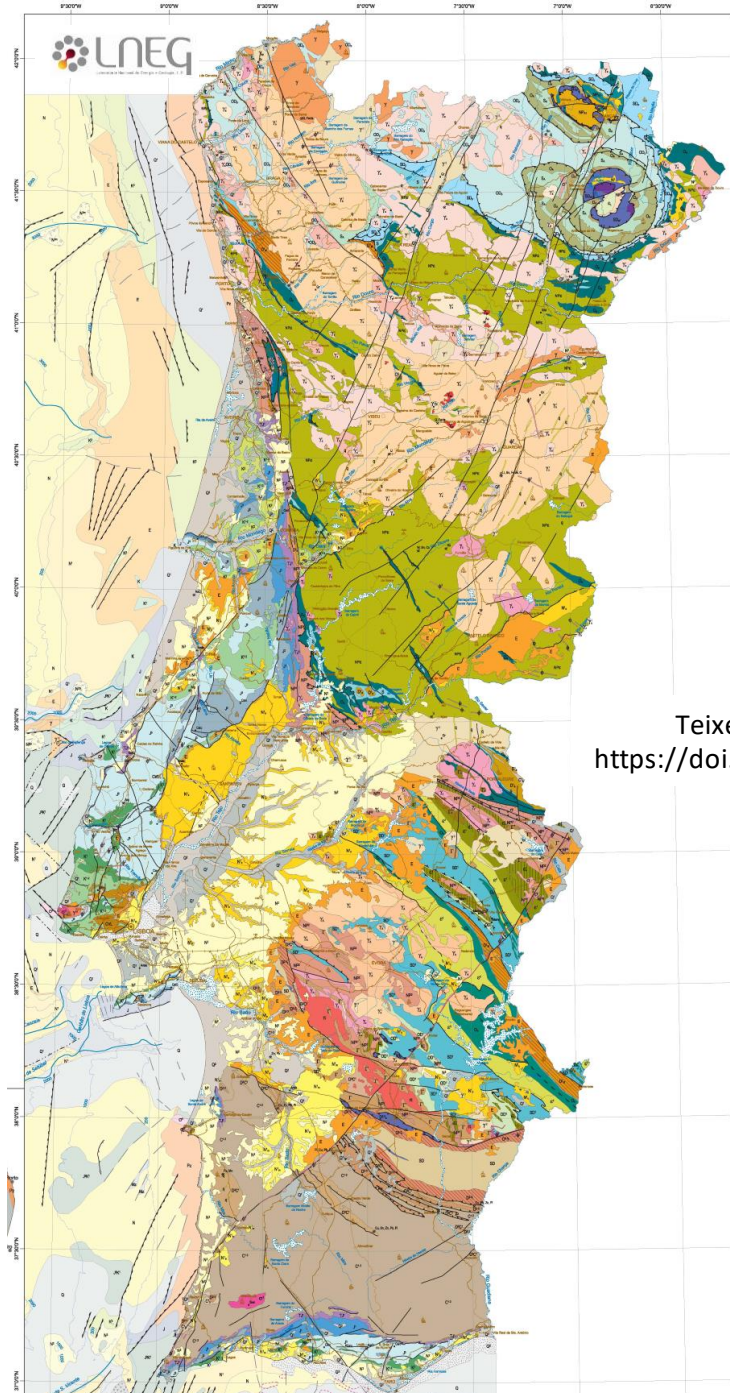
<http://doi.org/10.54499/ERA-MIN/0002/2019>
<https://mostmeg.rd.ciencias.ulisboa.pt/>



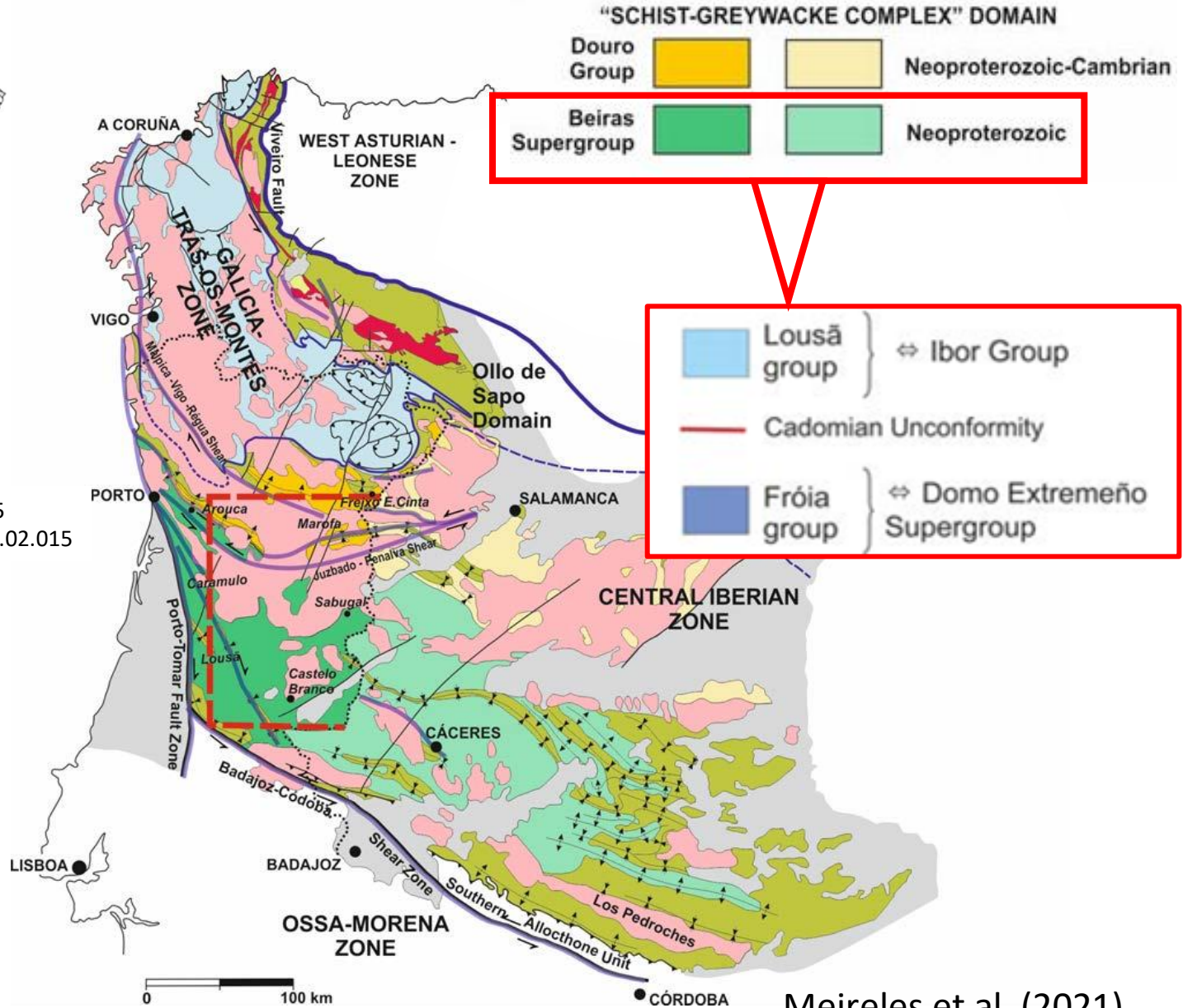
Harmonised lithostratigraphy and structural arrangements; progress and issues open to debate

Ícaro Dias da Silva; Ivo Martins
António Mateus; Alcides Pereira

The Schist-Greywacke Complex and the Beiras Group



Teixeira et al. (2011) Lithos 125
<https://doi.org/10.1016/j.lithos.2011.02.015>

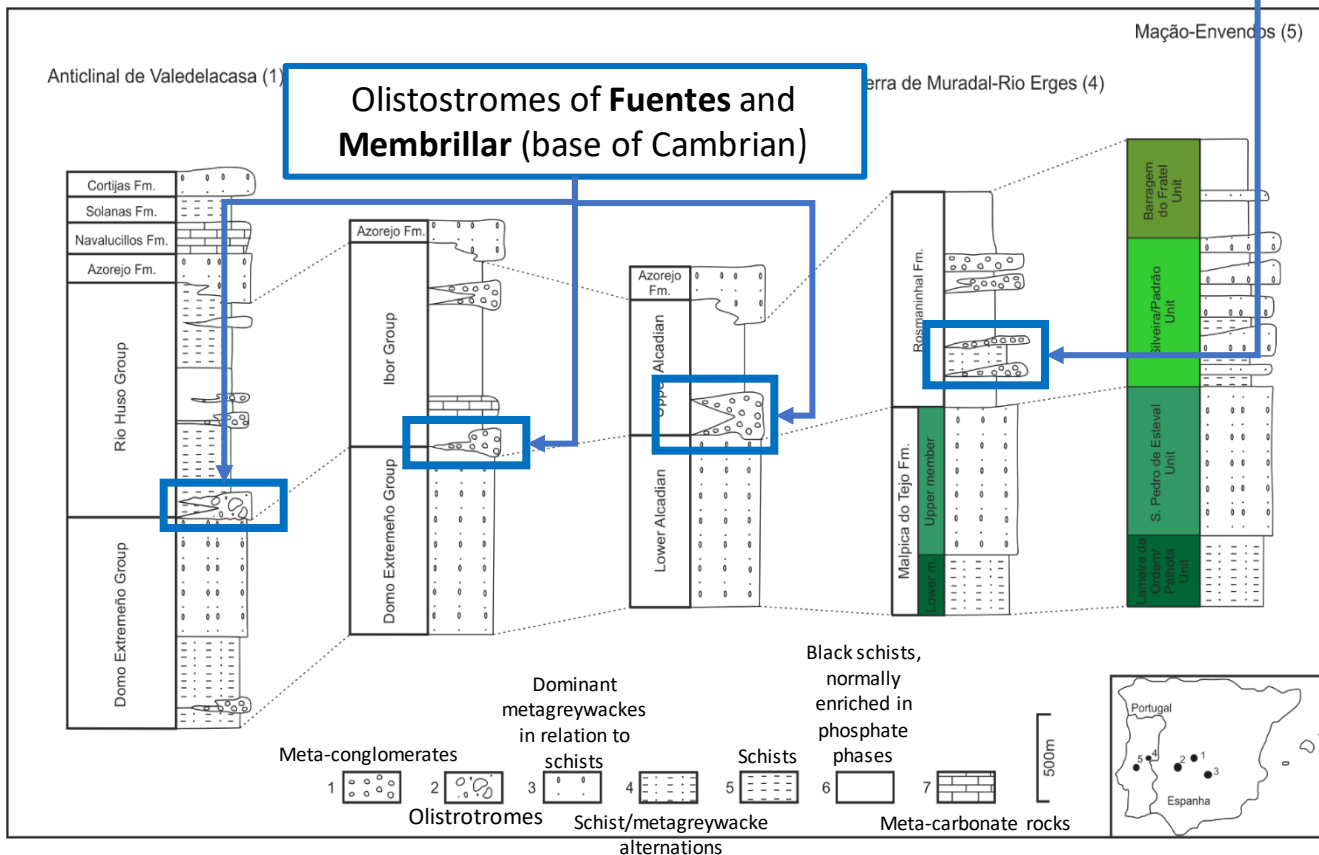


Meireles et al. (2021)

Correlation across the Iberian Massif (Pt-Sp)

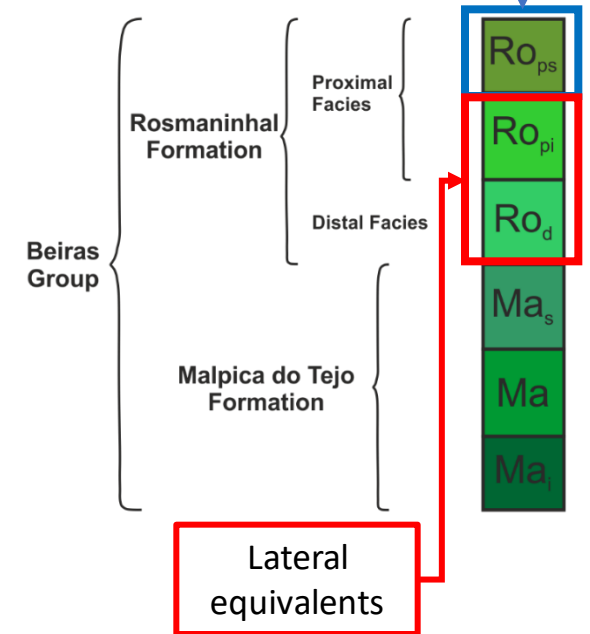
harmonisation used in the 1:100,000 map (MOSTMEG)

(Martins, 2020, after Ferreira da Silva, 2013)

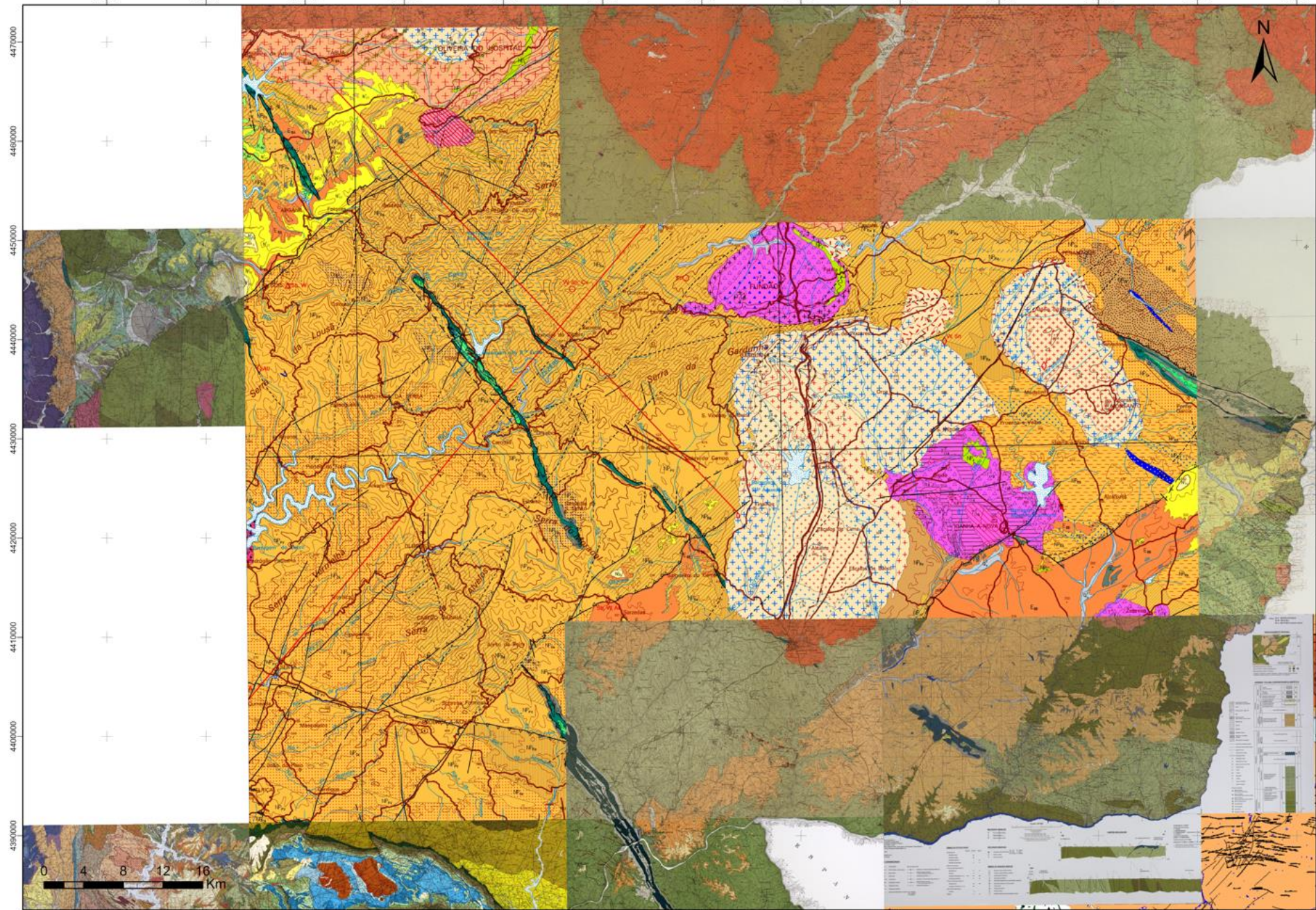


Includes the conglomerates of **Cabeço das Poupas** (Sequeira et al. 1996; Meireles et al., 2021)

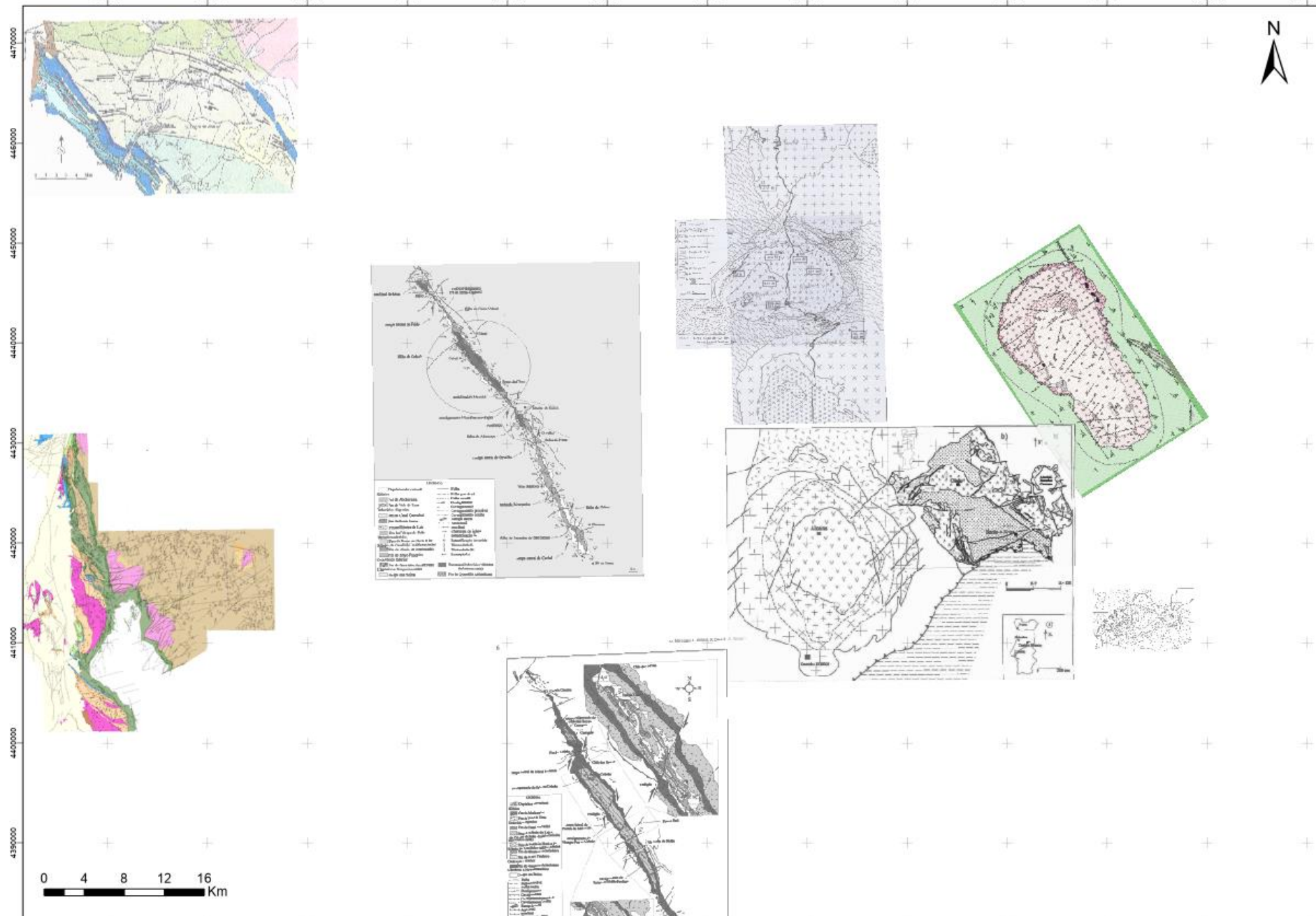
Neoproterozoic to lower Cambrian(?)



Published geological maps (LNEG) – 1:50.000 and 1:200.000



Published geological maps (papers, PhD thesis)



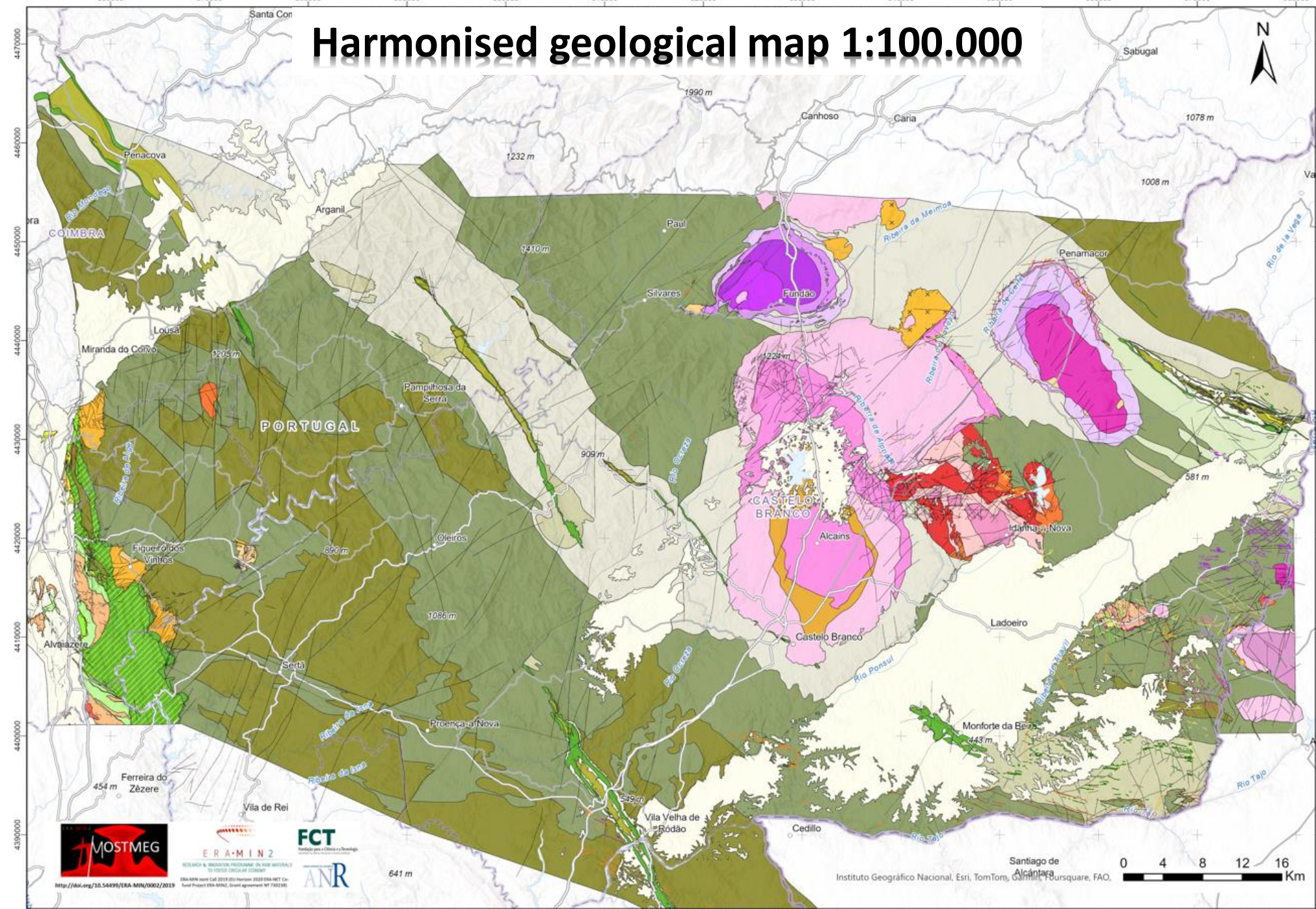
Unpublished geological maps (from 1940-2001, 1:25.000, LNEG)



Unpublished geological maps (Ferreira da Silva, 1:100.000, LNEG)



Harmonised geological map 1:100.000

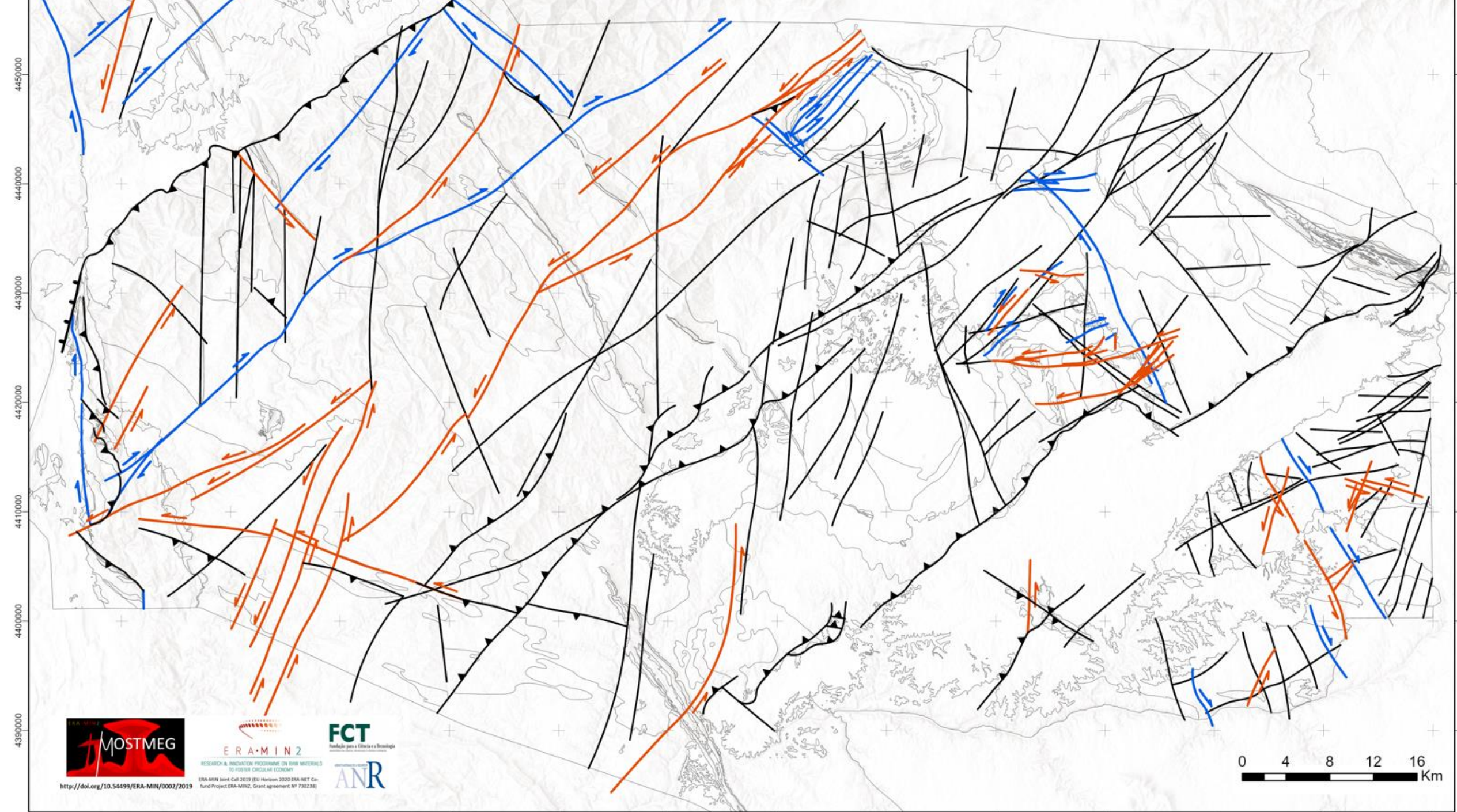


<https://doi.org/10.54439/ERA-MIN/10002/2019>

ERAMIN2
RESEARCH & INNOVATION PROGRAMME ON NEW MATERIALS
TO FOSTER CIRCULAR ECONOMY
ERA-MIN Incentive Call 2019 (51) Harmonised 2020 ERA-MIN Call
Final Project ERA-MIN2, Grant agreement: 10102301

641 m

Santiago de Alcantara
Instituto Geográfico Nacional, Esri, TomTom, Garmin, Foursquare, FAO, 0 4 8 12 16 Km

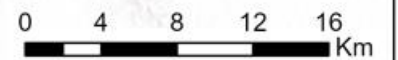


<http://doi.org/10.54499/ERA-MIN/0002/2019>

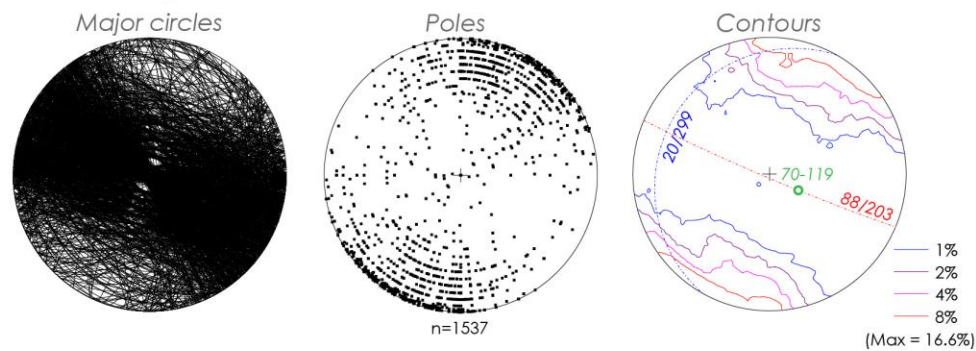


RESEARCH & INNOVATION PROGRAMME ON RAW MATERIALS
TO FOSTER CIRCULAR ECONOMY

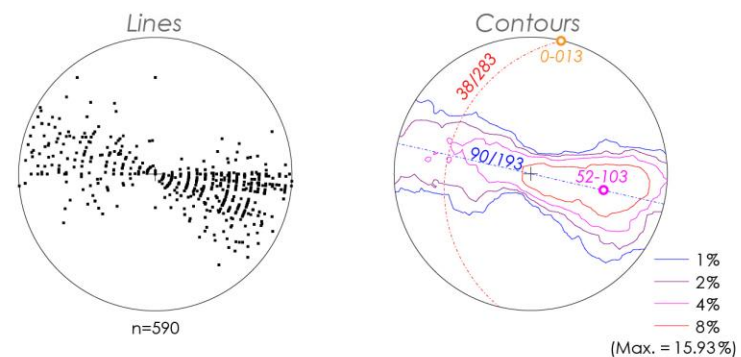
ERA-MIN Joint Call 2019 (EU Horizon 2020 ERA-NET Co-Fund Project ERA-MIN2, Grant agreement: NY 730238)



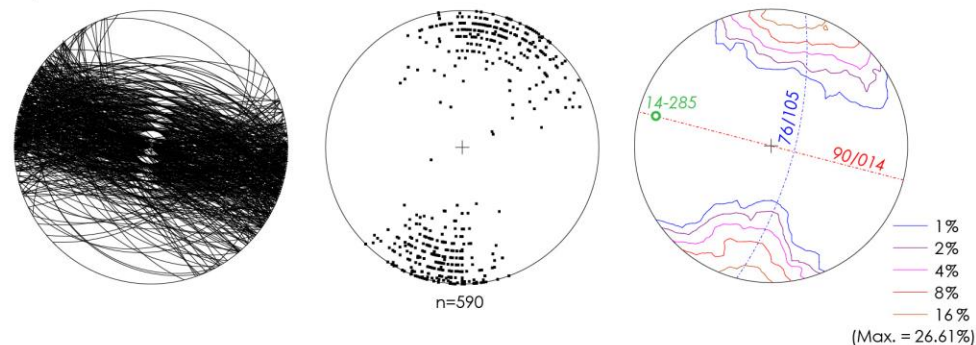
Bedding (S_0)



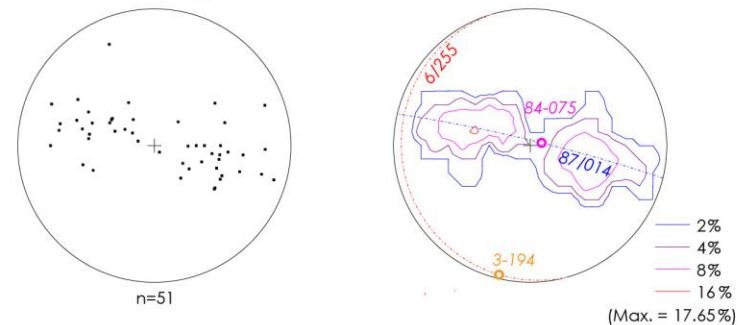
Intersection lineation (Li_1)



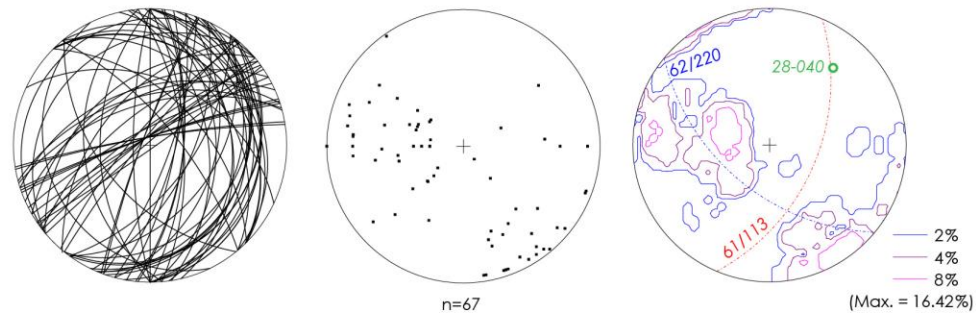
S_1 foliation



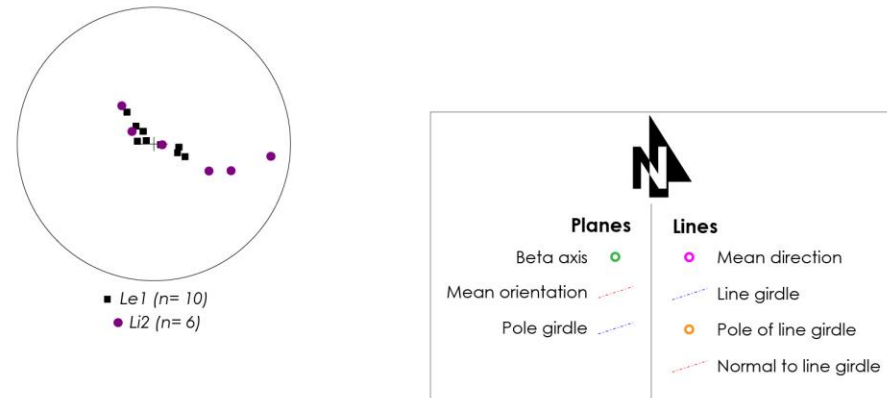
Fold axes (Lx_1)



S_2 foliation



Stretching lineation (Le_1) and second intersection lineation (Li_2)





Malpica do Tejo *Fm.*, Upper Member

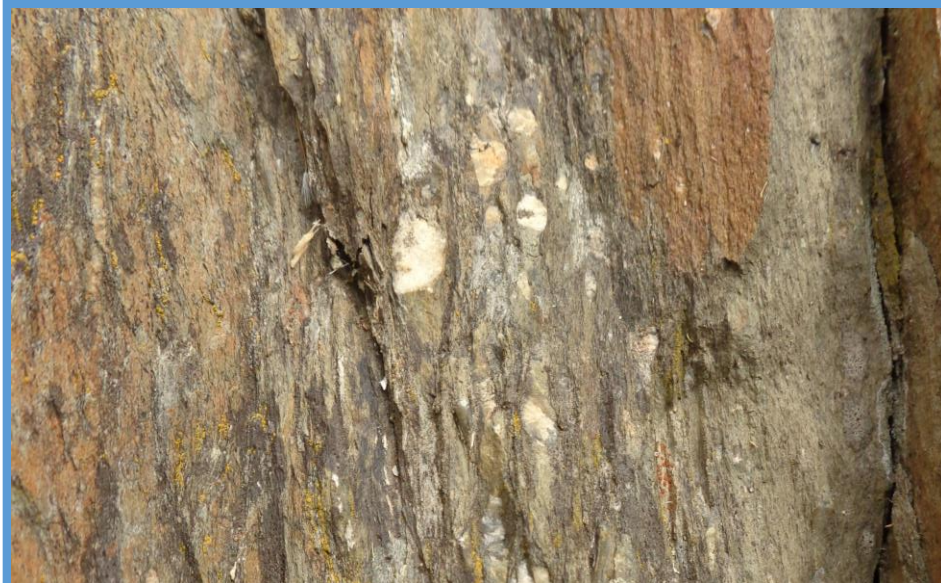
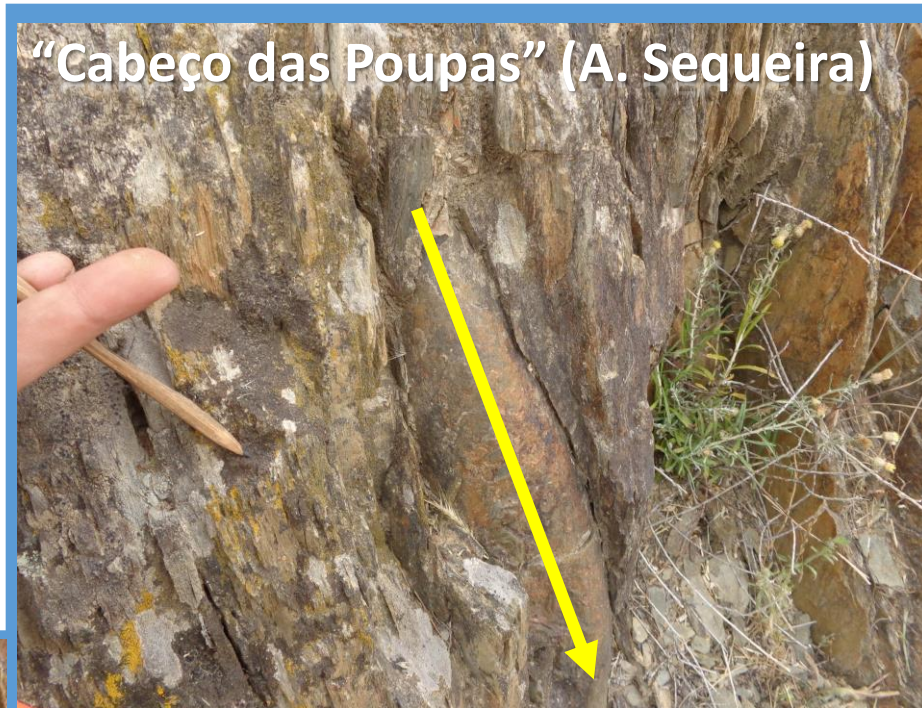




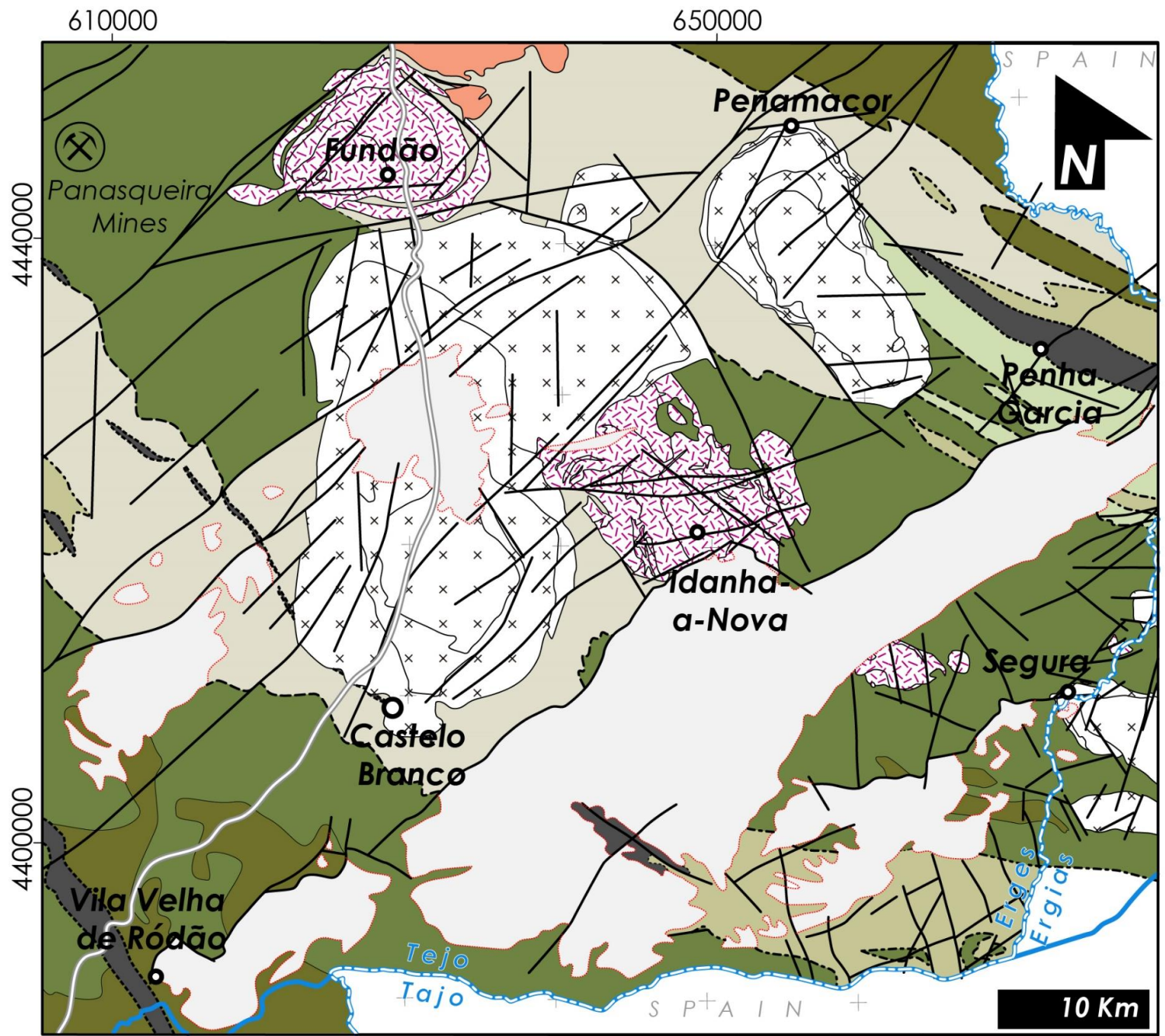






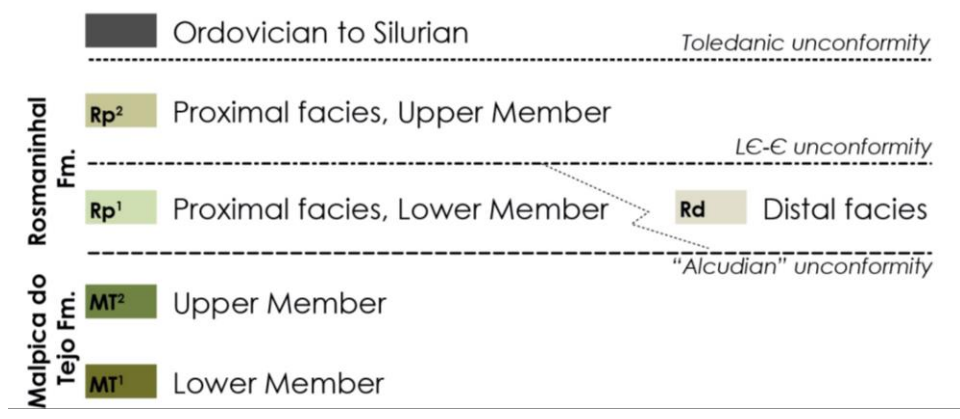


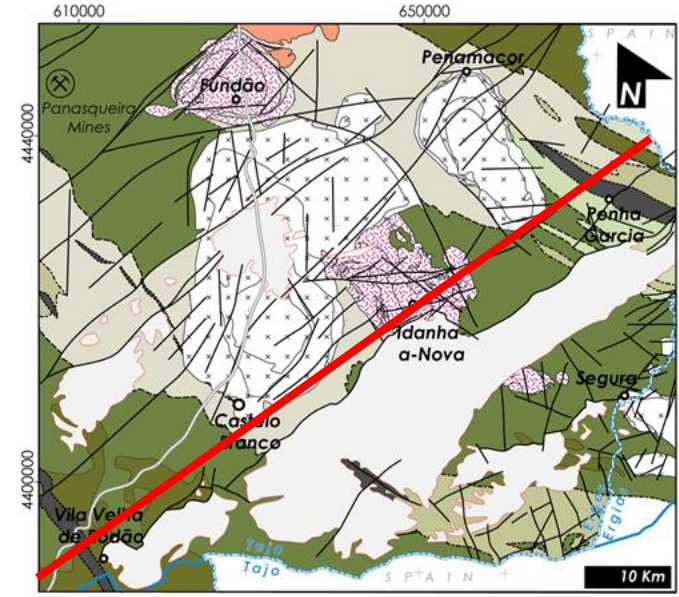
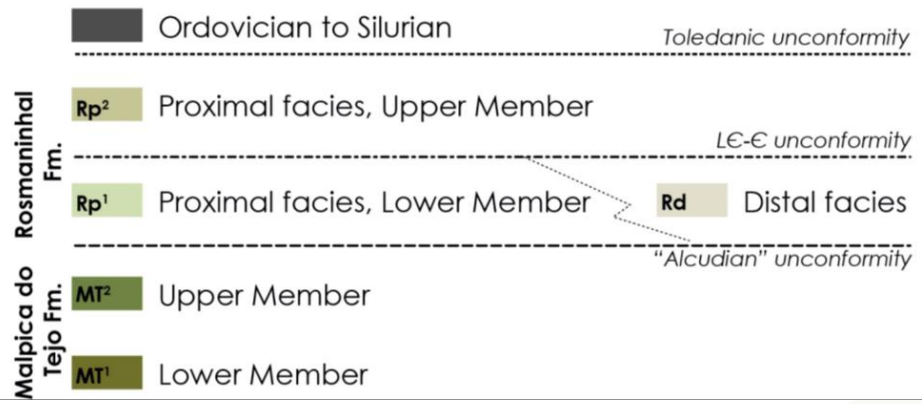
Olistostrome comprising heterometric and polygenic clasts (inc. andesites, quartzites, greywackes and milky quartz). It signs a “jump” in deformation observed below.



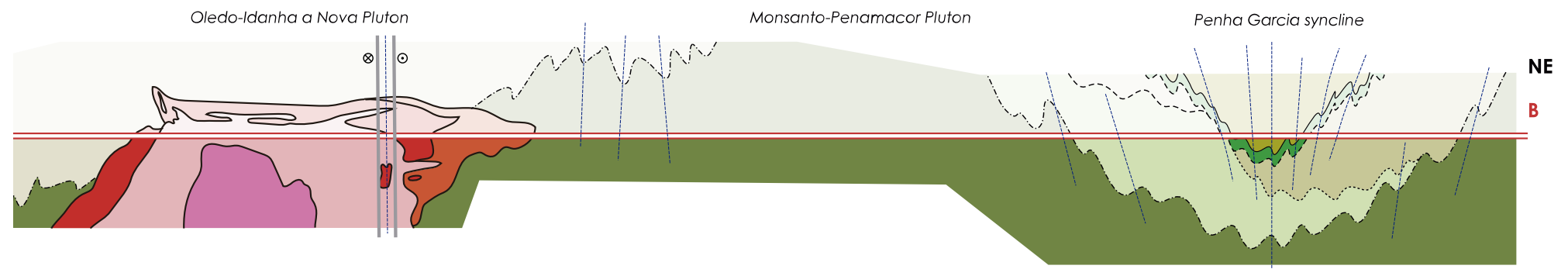
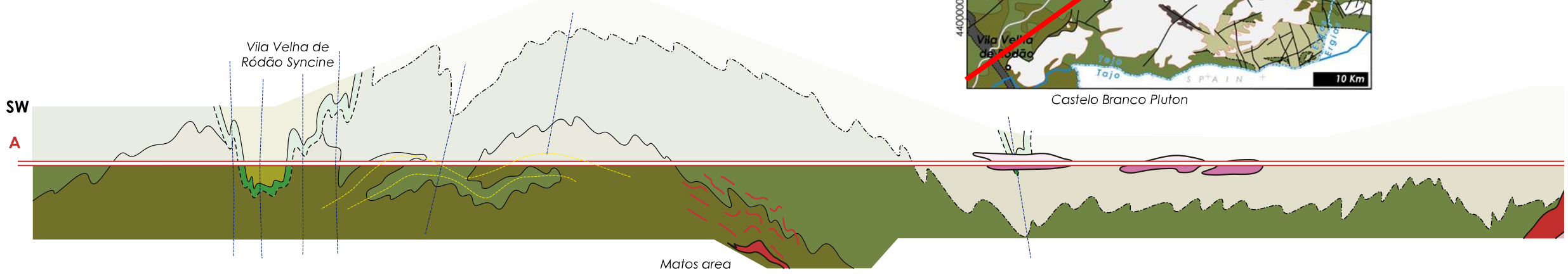
Ordovician plutons
 Variscan plutons

WGS 84, UTM, 29N

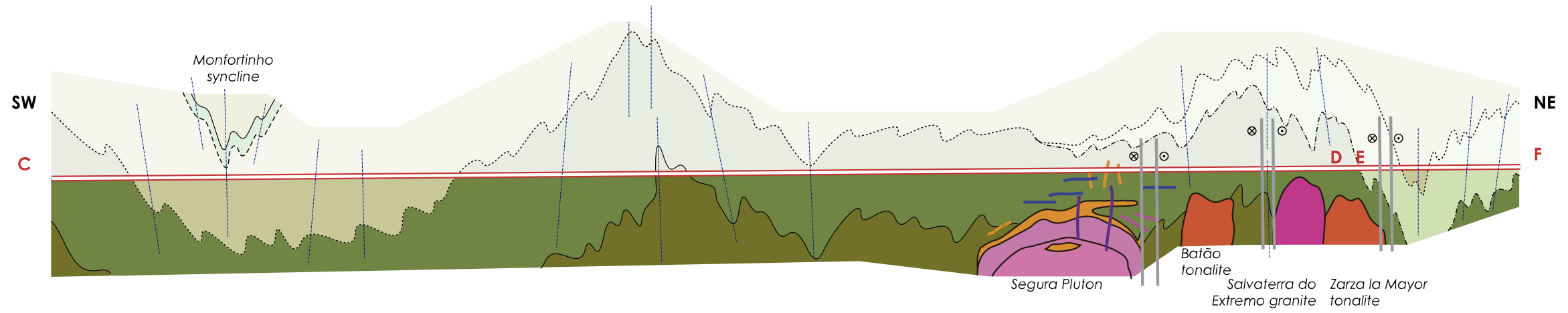
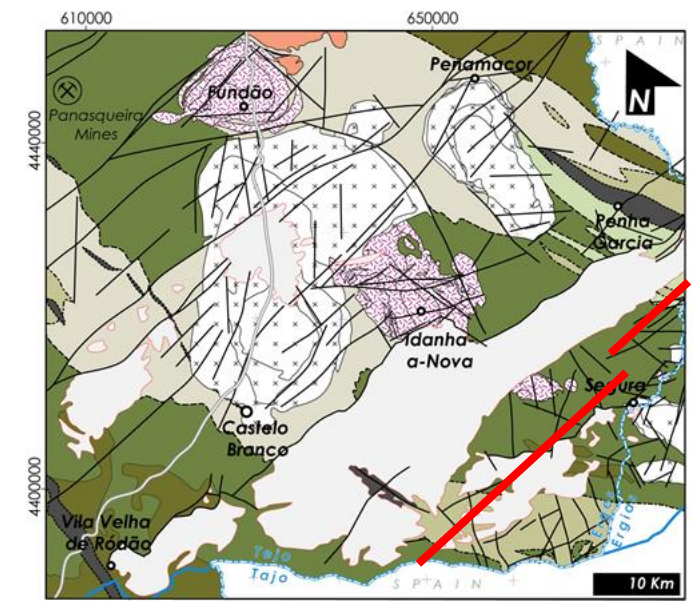
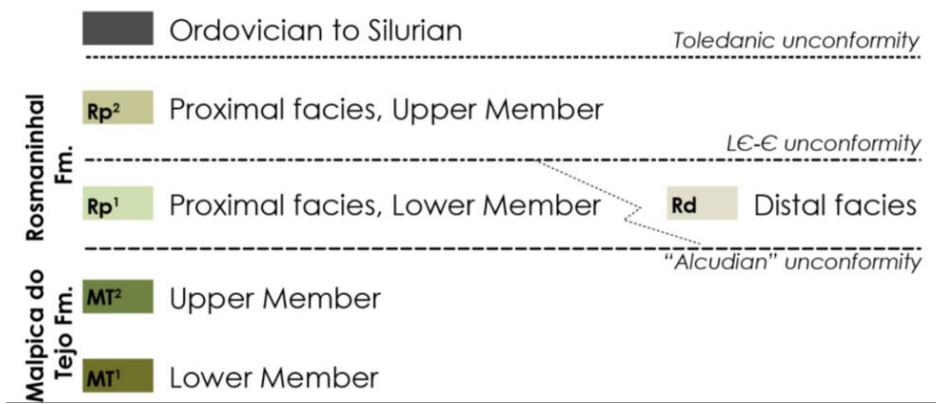


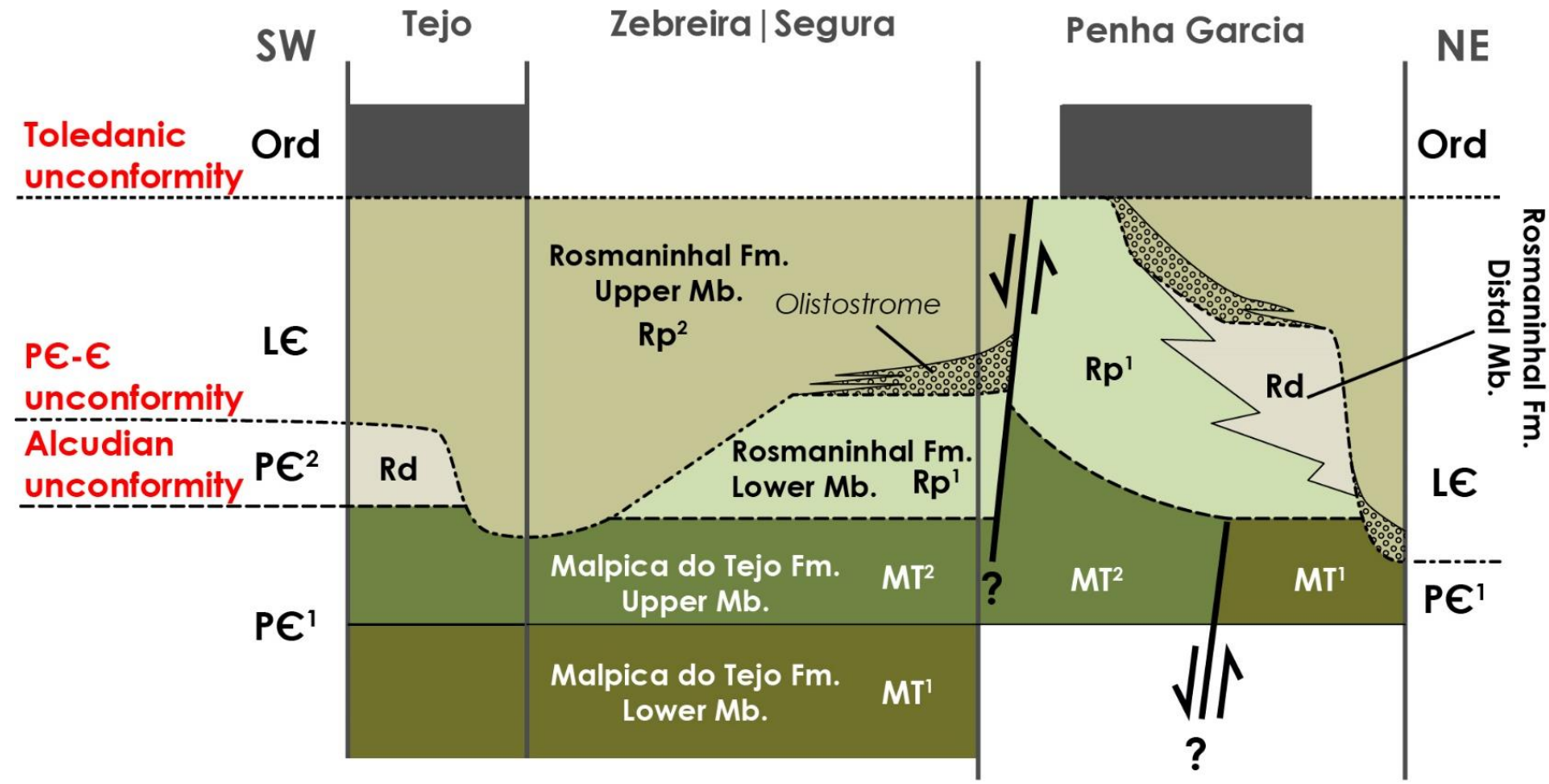
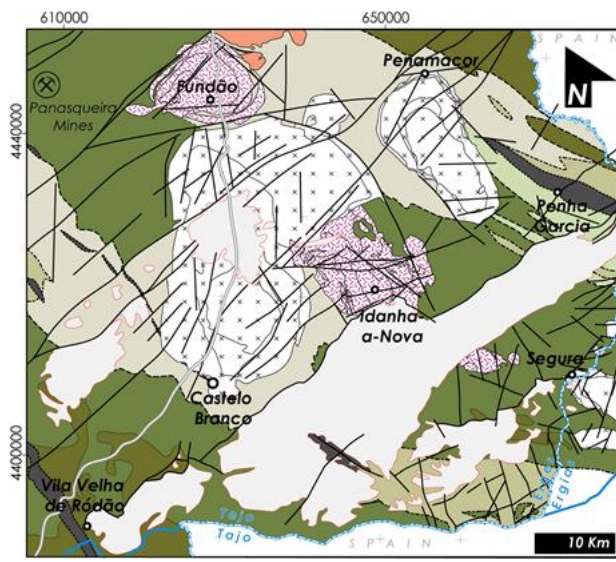
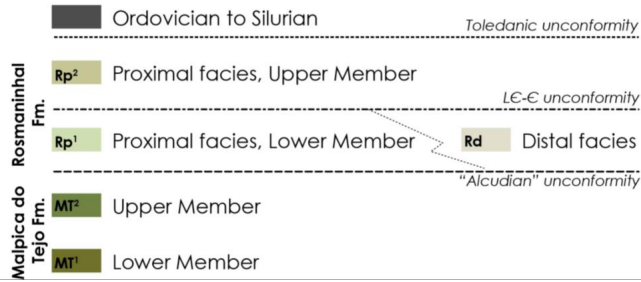


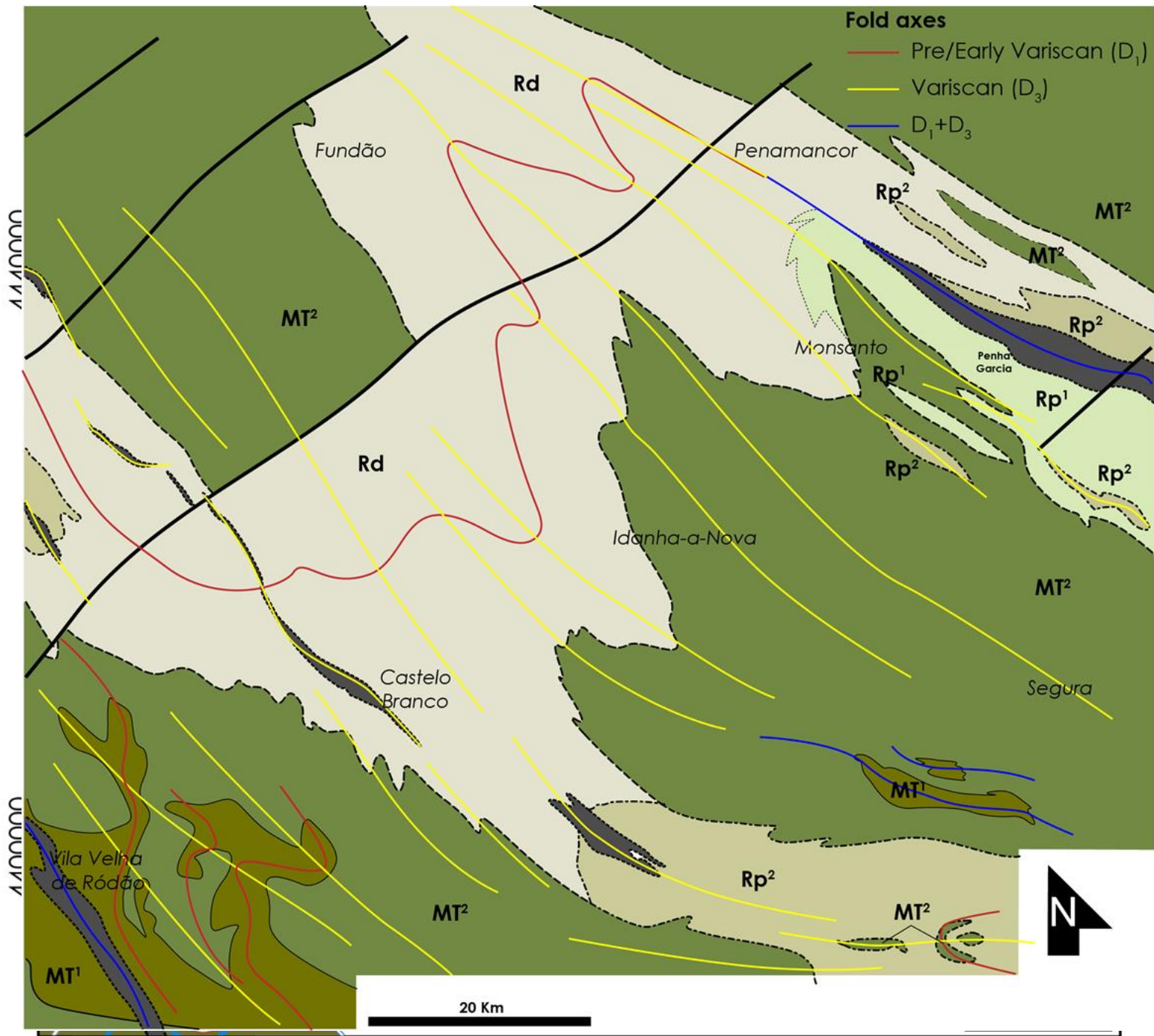
Castelo Branco Pluton



5 km
not to vertical scale









<https://mostmeg.rd.ciencias.ulisboa.pt/>

Thank you for your attention!

Malpica do Tejo Formation in Rosmaninhal, showing cleavage refracting in the bedding.

